



**LANDMARK  
UNIVERSITY**

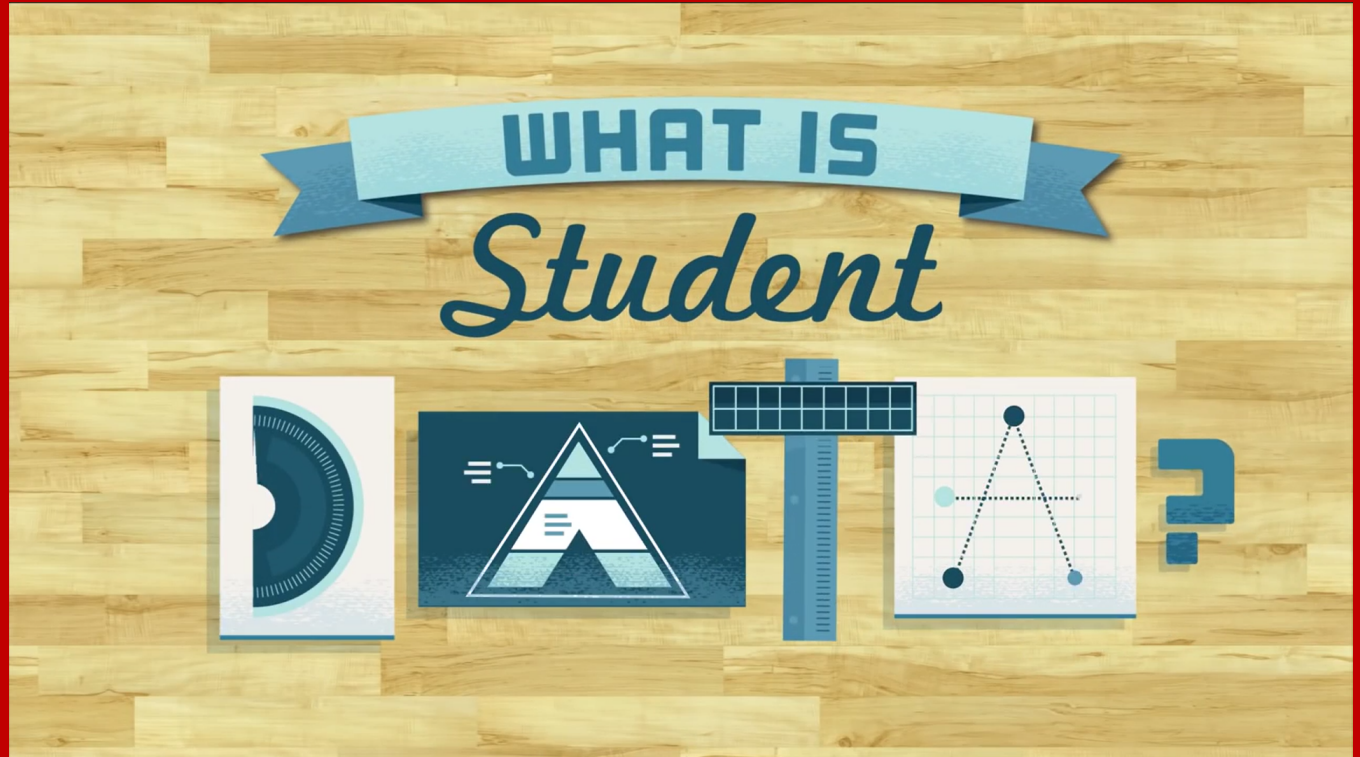
**DRIVING ATTENDANCE INTEGRITY  
AMONG FACULTY, STAFF AND STUDENTS  
A SINE QUA NON FOR ACCOUNTABILITY, RESPONSIBILITY,  
PRODUCTIVITY AND ACADEMIC EXCELLENCE IN LMU**

Omega Semester | Executive Advance

Landmark University

**January 05, 2018**

# Video Introduction





# Expectations from LMU Students

- Worthy in **Character** and **Learning**
  - Core Values Compliant
  - Academic Excellence
  - End Product [Pathfinder]
    - Generation of **Solution Providers**
    - New generation of **Leaders**
    - Army of **Reformers**



# Expectations of Parents/Sponsors

- High Academic Achievement
- Timely Graduation
- Built Character
- Career and Life fulfillment
  - After School





# LMU's Enabling Environment

- Qualitative academic Programmes
  - **Qualified Academic staff**
- Well-stocked library
- Adequate teaching facility
- Robust ICT infrastructure
- Comfortable Hostel accommodation
- Utilities
  - **Electricity**
  - **Water**
- Serene environment





# ...Meeting Expectations

- What we don't **KNOW** we cannot **MEASURE**
  - What we cannot **MEASURE**, we cannot **IMPROVE**
  - What we don't **IMPROVE** will **DETERIORATE**
  - Anything that **DETERIORATES** will soon become **EXTINCT**





# DATA: Key to Knowledge

- Facts and statistics collected together for **reference** or **analysis**
  - Determines what we **KNOW**
  - Defines what we can **MEASURE**
  - Data can provide insights that help to answer key corporate questions
    - How best can we **IMPROVE** student **ACHIEVEMENTS?**
  - Data is the **FUEL** for qualitative decision making



# LMU Class Attendance System

- **Motivation**

- **Underscores LMU's Serious approach to the core business of Teaching and Learning**
- **Data Gathering**
  - Analysis and Reference to improve policy decisions regarding teaching and learning
- **Enriched Academic Engagement for students**
  - Learning and Skills development





# LMU Class Attendance System

- **Motivation**

- **Ensure Accountability**

- Classes hold
    - Students are attending classes
    - Report progress to
      - Heads of Departments
      - Deans
      - Management
      - **Parents/Sponsors [SMS and email]**



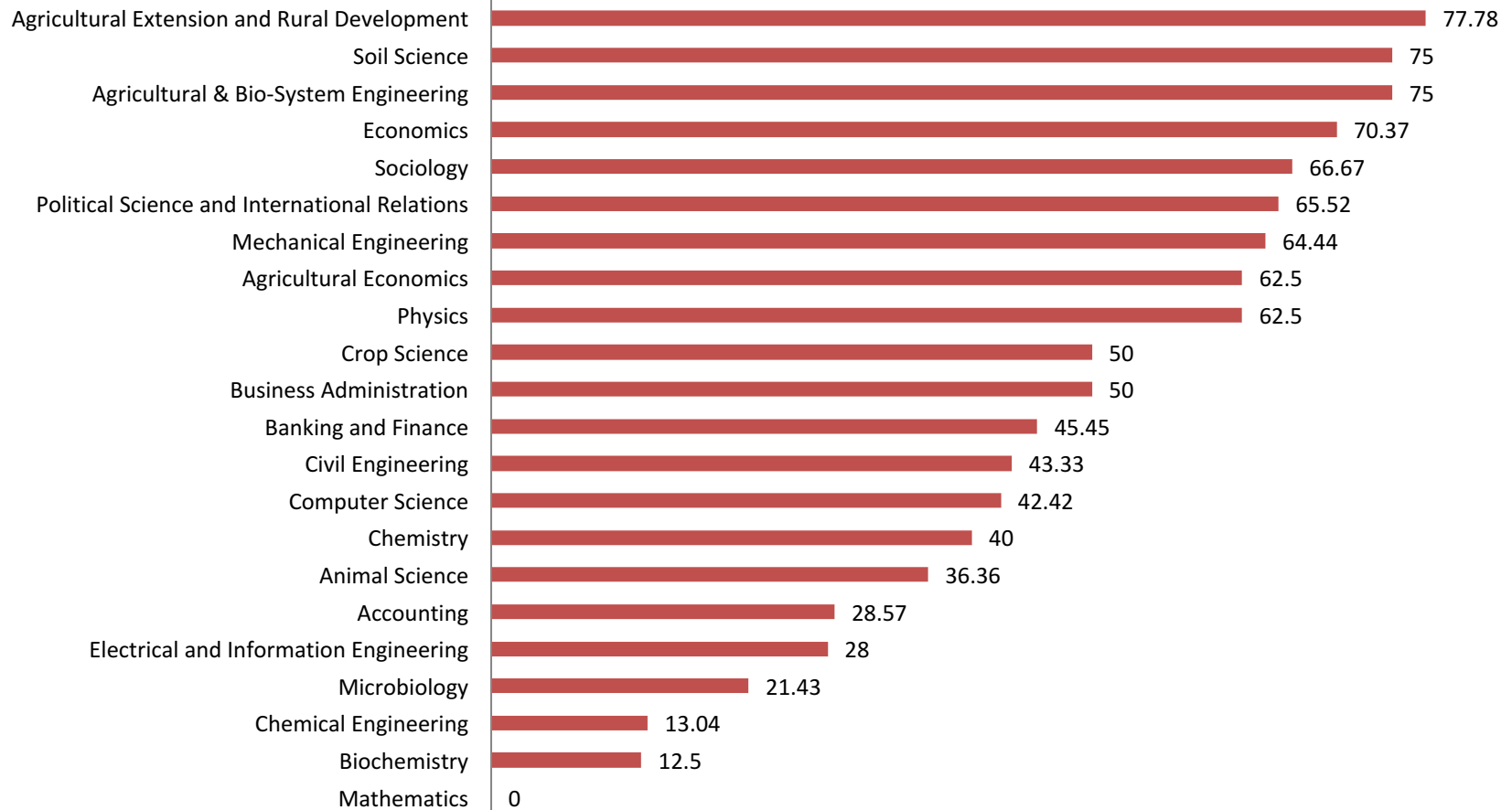


# LMU Class Attendance System

- **Milestones**

- **First time the 75% minimum attendance requirement was FULLY implemented**
  - Management, Senate and CSIS supports
  - Stakeholders' involvement
    - **Weekly Reports**
      - Parents/Sponsors
      - Faculty
      - Managements (including HoDs and Deans)
- **MEAN COMPLIANCE of 46.85%**
  - Many last minutes uploads & a number of errors reported

# 100% Attendance Upload in Alpha 2017/2018





# LMU Class Attendance System

- Some Challenges

- Negligence of the established **DOWNLOAD** and **UPLOAD** instructions
- Refusal to accept responsibility for errors made
  - Easier to **BLAME** it on CSIS
- Courses assigned to **Adjunct Lecturers**
- Falsification of attendance records
  - Make students sign for lectures that **did not hold** to keep attendance upload rate at 100%
  - **Duplication** of attendance record to cover for misplaced or lost attendance sheets



# LMU Class Attendance System

- Expectations for Omega Semester
  - **100% FULL COMPLIANCE** by Faculty
  - Start using the portal from **Week one**
    - Downloading and uploading
  - Submit copies of attendance weekly to the **Departmental Officers** for onward processing to attendance office for archiving.
  - High **INTEGRITY** of Data



# Expectations for Omega Semester

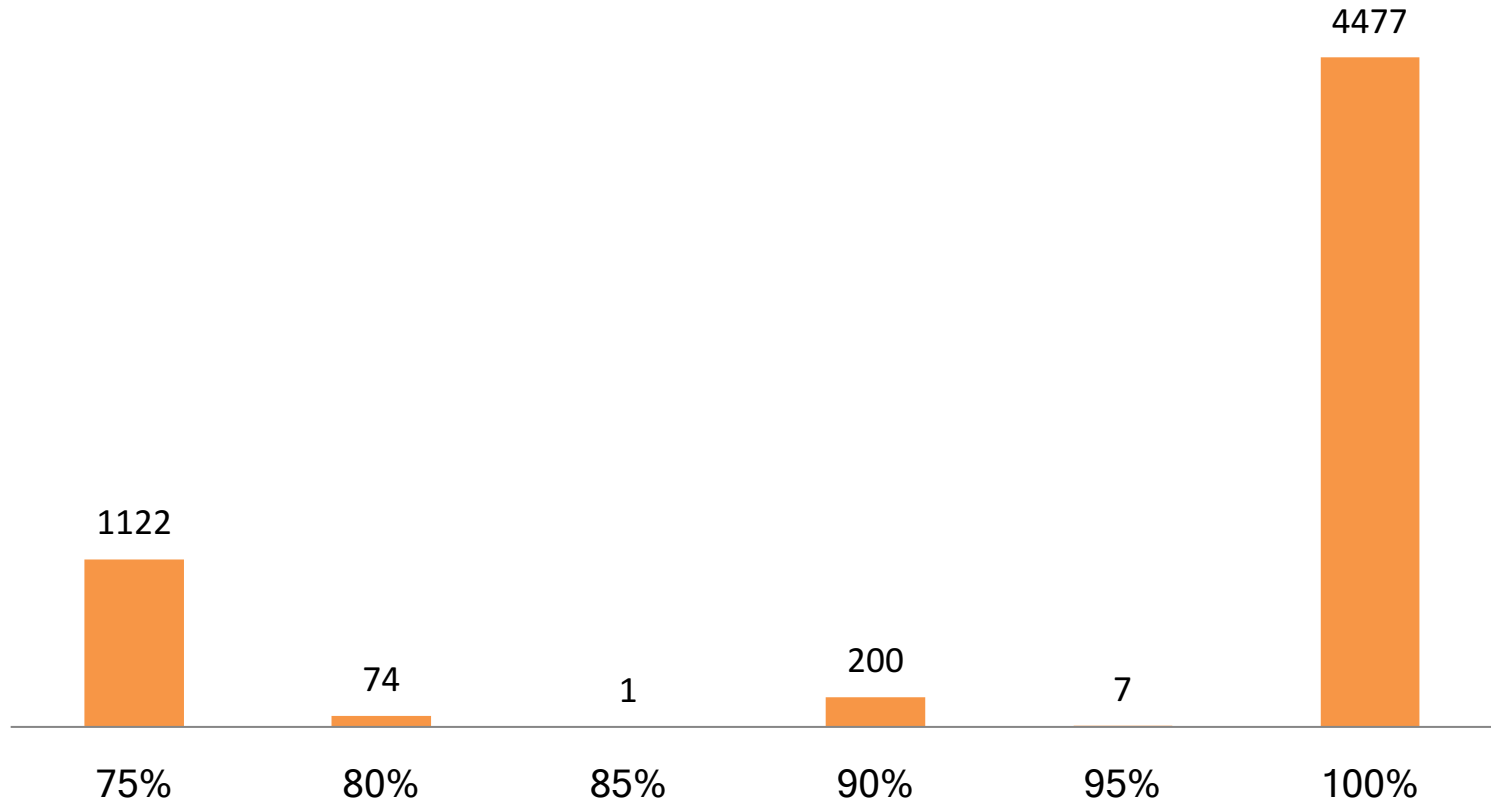
CURRENT	CHANGES	IMPLICATION	REMARK
Single Course-Upload Assignment	Multiple Course-Upload Assignment	Two or more Lecturers that are assigned to a Course can now Upload respectively for their Lectures	<b>The uploads MUST NOT BE same day.</b>
Departmental-Course Uploads	One-time Course Upload	Rather than uploading for multiple departments, Lecturers can now upload a Course once for all Programmes taking the Course	<b>Download one file for a particular course and lecture and upload just ONE file</b>
Schedule Dependent	Timetable Dependent	If the Timetable specifies a Course holds twice (2) per week, Attendance is expected to be uploaded for such course <b>Twice</b> in a week	<b>Strict adherence to Timetable and Lecture structures</b>
Weekly Attendance Download	Daily Download	Incorporation of daily Registration for students	<b>Visibility of student's eligibility</b>
End-of-Semester Appraisal	Daily Real-time Appraisal	Lecturers can now view their daily/weekly Upload statistics and the impact it has on the students' eligibility	<b>Progress reports of students in your Course and Exam eligibility implication</b>



# Lessons from Last Semester

- The **HIGHER** the *number of students* in a class, the **HIGHER** the number of those **INELIGIBLE** to write exams.
- Students with **100% ATTENDANCE** earned more **A Grade** than any other attendance percentages ( $\geq 75\%$ ).

# Attendance Percentage and A Grade



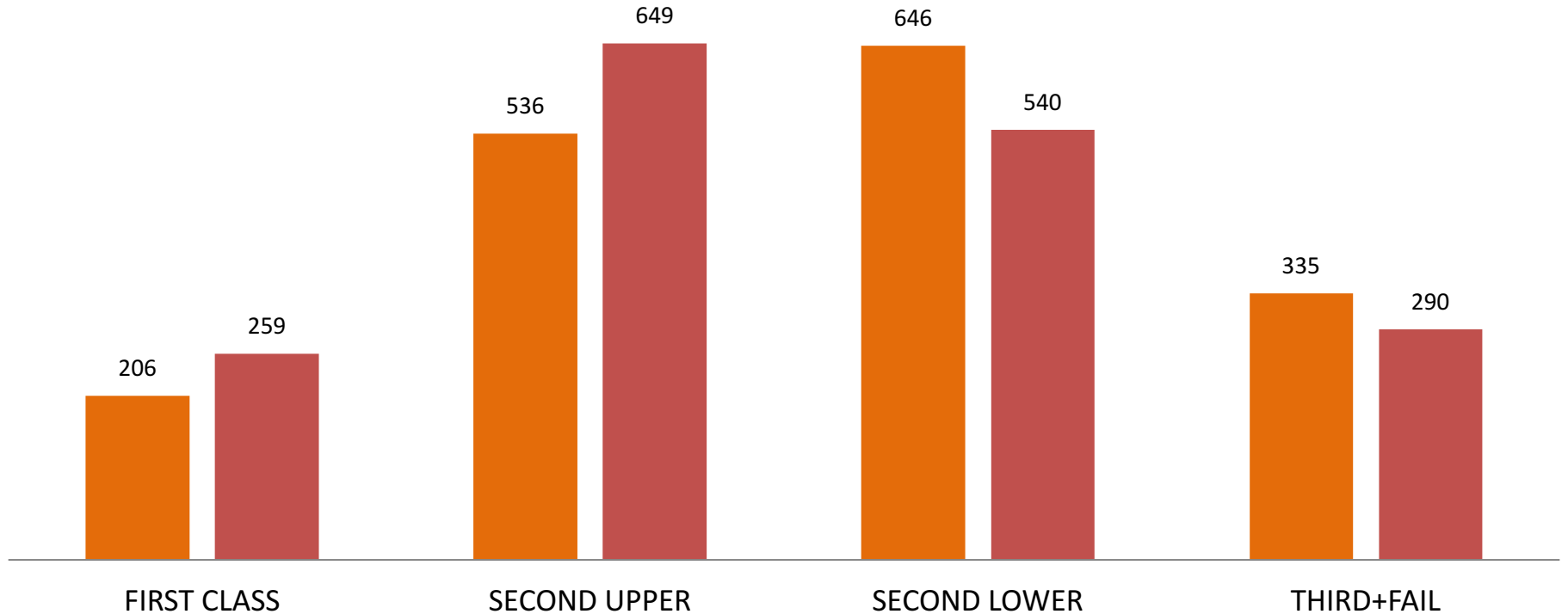




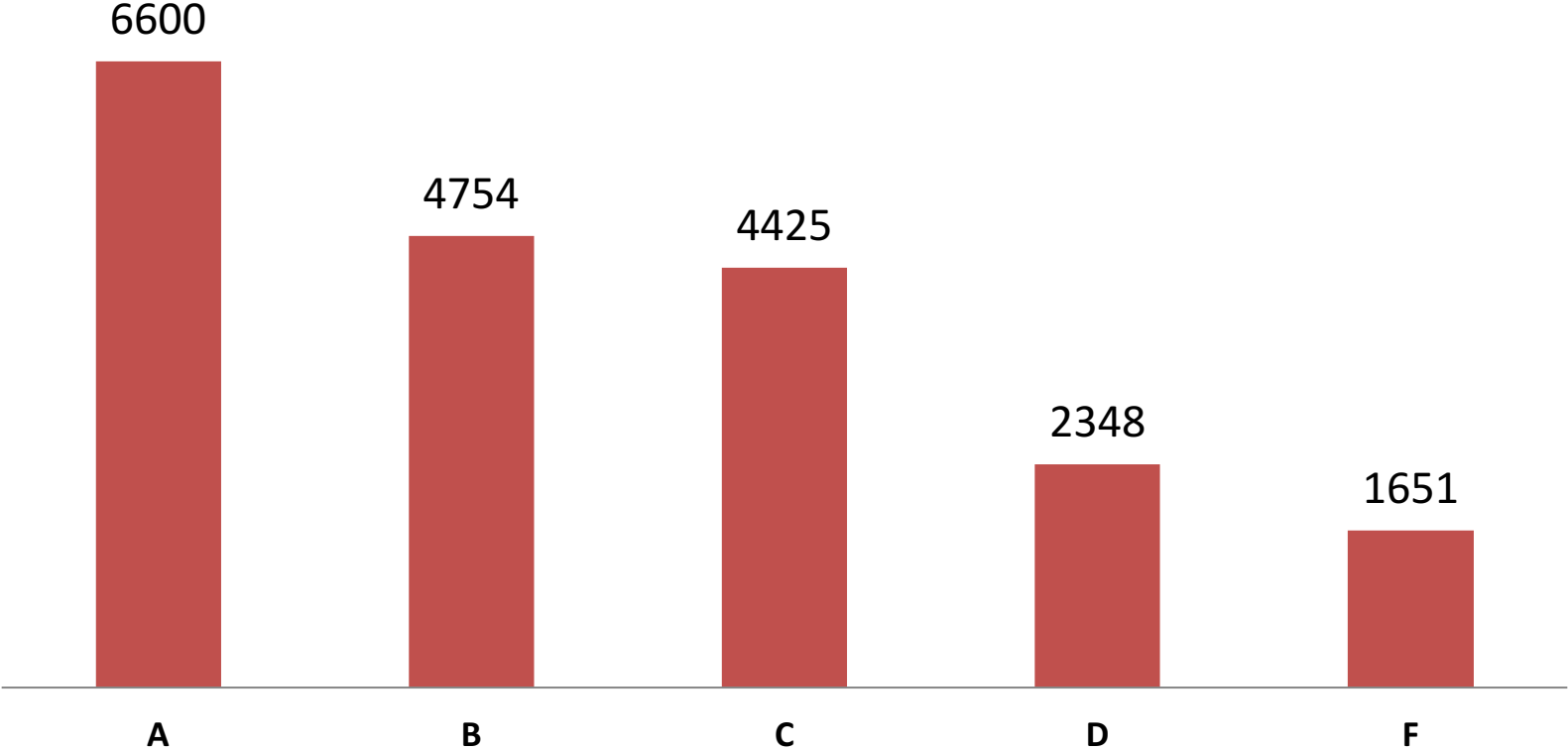
# **Other Lessons Learnt from Last Semester's Results**

# Distribution of Class Grades based on GPA for 2016 & 2017 Alpha Semesters

2016 2017



# Letter Grade Distribution for 2017 Alpha Semester



**Number of  
Students with  
GPA of 5.00  
Across  
Programmes  
and Levels**

Programme	200	300	400	500	Total
Accounting		1			1
Agricultural Economics	1				1
Agricultural Engineering				1	1
Biochemistry	1	1			2
Business Administration		2			2
Chemical Engineering				1	1
<b>Civil Engineering</b>		<b>1</b>		<b>2</b>	<b>3</b>
Computer Science	1		1		2
Economics	1		1		2
Electrical and Information Engineering	1		1		2
<b>Industrial Chemistry</b>			<b>3</b>		<b>3</b>
Mechanical Engineering			1		1
Microbiology		1			1
<b>Total</b>	<b>5</b>	<b>6</b>	<b>7</b>	<b>4</b>	<b>22</b>



# 2017-2016 Alpha GPA

	Alpha 2017	Alpha 2016
Aggregated GPA (Mean)	3.40	3.31

\*Significant difference in GPA for Alpha 2017 (M=3.40, SD=1.02) and Alpha 2016 (M=3.31, SD=0.90);  $t(4.91)$ ,  $p < 0.05$



# In The nearest Future...

- Remove the burden of capturing and uploading of attendance records from Faculty
  - **Automate attendance capture via biometrics**
    - A prototype device is being developed to assist in this regard
    - Touch screen device that scans both IDs and fingerprints
    - Automatically upload the record to the attendance portal



# ...In Some distant Future

- We hope to gather the following data to improve student success rate:
  - Learning and classroom engagement
  - Academic Motivation and (de)Motivation
  - Digital footprints
  - Extra-curricula activities
  - Behavioral and Character assessments



# Conclusion

- Let us all **COMMIT** to drive the **INTEGRITY** of Lecture attendance Records
- The End results would be
  - Greater Accountability
  - More Responsibility
  - Higher Academic Achievements
  - Overall, Greater Academic Excellence in LMU





**LANDMARK  
UNIVERSITY**

**Thank You for Listening**